

MOC-3400

Denver.eu

June, 2025



FR

Cet appareil et
ses cordons sont
recyclables

À DÉPOSER
EN MAGASIN



OU

À DÉPOSER
EN DÉCHÈTERIE



Points de collecte sur www.quefairedemesdechets.fr
Privilégiez la réparation ou le don de votre appareil !

1. Safety Information

Please read the safety instructions carefully before using the product.

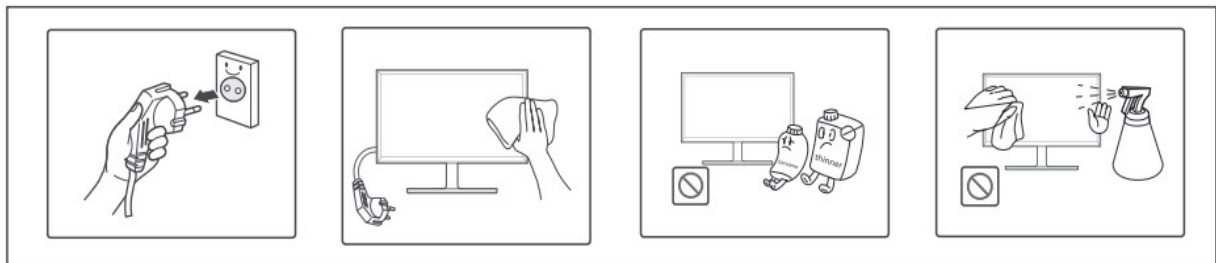
1. This product is not a toy. Keep it out of reach of children.
2. Keep the product out of reach of children and pets to avoid chewing and swallowing of parts.
3. Product operating, and storage temperature is from 0 degree Celsius to 40 degrees Celsius. Under or over this temperature might affect the function.
4. To prevent fire or electrical shock hazards, do not expose this device to rain or moisture.
5. Before using this device, make sure all cables are correctly connected and the power cable is not damaged. If there is any damage, please contact the shop immediately.
6. Never open the product. The device may contain parts with deadly voltage.
7. Repairs or service should only be performed by qualified personnel.
8. The direct plug-in adaptor is used as disconnect device. The disconnect device shall remain readily operable. So, make sure there is space around the power outlet for easy access.
9. Do not expose to heat, water, moisture and direct sunlight!
10. Do not insert any object or make any liquid splash into the opening of the cabinet of this device.
11. In order to prevent fire and other injuries. Please turn off the display when you leave the room for a long time.

2.Clean the monitor

Please make sure the monitor is disconnected form the power supply before cleaning the monitor.

Please wipe the monitor screen with a clean, soft cloth. Do not spray alcohol, active agent, and other detergents on the screen surface, otherwise the product may be damaged.

Use a soft cloth dampened and wrung out to clean the housing part of the monitor. Do not use strong cleaners to clean the housing.

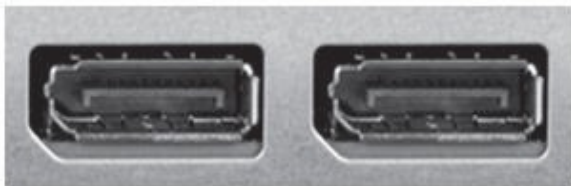


3. Monitor inputs and outputs

2x HDMI 2.0 inputs



2x Display port 1.2 input



DC power input (24V – 2.5A)



Earphone out



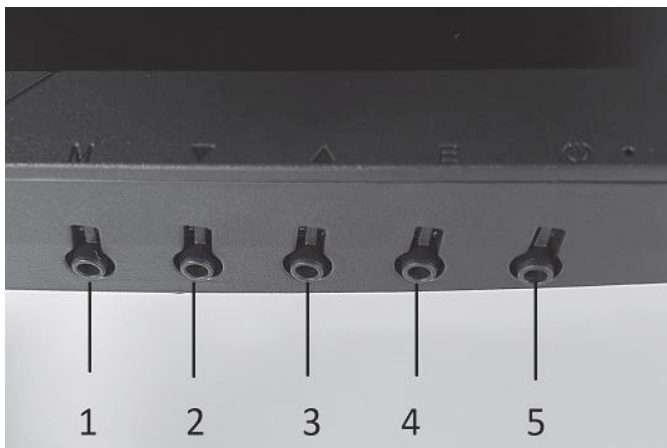
4. Monitor navigation buttons

On/Off button: If you want to turn on the monitor press the on/off button, if you want to turn off the monitor press it again.

M button: The OSD menu is displayed on the screen. Once inside, it also has the function to accept or access the interior functions.

E button: Exits the current menu or exits the OSD menu.

Up / Down direction buttons: The up and down direction button allows you to move between the different menus and modify values.



1. Menu and select button.
2. Down / brightness button
3. Up / volume button
4. Exit / HDMI-DP button
5. Standby power off / on

5. OSD MENU

The OSD menu of the monitor provides various settings for the monitor, such as color, brightness and contrast, etc.

Main menu	Submenu	Description
InputSource	DP1	Activate Display port 1
	DP2	Activate Display port 2
	HDMI1	Activate HDMI port 1
	HDMI2	Activate HDMI port 2
Brightness/Contrast	Brightness	Adjust brightness
	Contrast	Adjust contrast
	DCR	Activate / deactivate Dynamic Contrast Ratio (DCR)
Color Setting	Gamma	Set gamma level
	PictureMode	Set picture mode
	ColorTemp	Set color temperature
	Hue	Set the color tone
	Saturation	Set the saturation
	LowBlueLight	Adjust the bluelight of the screen
PictureQualitySetting	Sharpness	Adjust the sharpness
	Response time	Adjust the response time
	SuperResolution	Adjust the sharpness filter if using lower resolution input
	BlackLevel	Adjust the black level
Display	ImageRatio	Adjust the aspect ration of the screen
Audio	Mute	Mute sound
	Volume	Adjust volume
Multi-Window	Multi-Window	Activate PIP (picture in picture) mode
		Activate PBP (picture by picture) mode
	SubWin2 input	Choose input source for second picture mode
	PIP Size	Chose PIP size
	PIP Position	Choose PIP position on screen
	SWAP	Swap primary and secondary picture mode
OSD	Language	Choose menu language
	H.Position	Change menu position horizontally
	V.Position	Change menu position vertically
	Transparence	Adjust menu transparency
	Timeout	Adjust menu timeout
	OSDRotation	Rotate OSD menu

Other	Adaptive Sync	Activate / deactivate adaptive sync (Support for Freesync and G-sync)
	HDR	Activate / deactivate HDR (High Dynamic Range) function
	MPRT	Activate / deactivate MPRT (Moving Picture Response Time) function. Reduces blur.
	Cross	Activate / deactivate aiming cross on the screen. Typical used for 3D gaming shooters.
	LedEffekt	Activate / deactivate LED light on the back side of the monitor
	Reset	Reset Screen settings

6. VESA measure for wall mounting

Please note that wall mounting kit and risers for wallmount is not included.

VESA 75x75

7. Troubleshooting

The monitor keeps turning on and off

Solution: Check whether the signal wire is properly connected between the monitor and the PC host, and the connection is secured in place.

A blank area appears around the screen.

Solution: The blank area on the screen is not caused by the monitor, but by the graphics card or the host computer. To fix this problem, adjust the screen size parameters in the screen or in the host system, and keep the driver of the graphics card up to date.

The power light is off, and the screen does not turn on.

Solution: Please check whether the power cord is properly connected. After the power connection is correct, please check whether the in the power indicator light on the screen is on.

The image is too bright or too dark.

Solution: Please adjust brightness and contrast in the screen OSD menu.

No input signal

Solution: Please check whether the HDMI or DP cable is properly connected, and that the PC is turn on.

TECHNICAL SPECIFICATIONS

Display: 34" Curved monitor

Panel type: MVA R1500 curvation

Resolution: UWQHD 3440*1440

Frequency: 165Hz

Response time: 1ms OD (Overdrive)

Backlighting: LED

Contrast: 4000:1

Format: 21:9

Inputs/outputs: 2x DP 1.2, 2x HDMI 2.0, earphone out

VESA: 75mm x 75mm (Wallmount and risers is not included)

Speakers: 2x3W

Power adapter specifications

Name or trademark	Shenzhen Jiuzhou Power Technology Co., Ltd.
Commercial register number	91440300576362063Y
Manufacturer's address	4/F First Block, Jinmeiwei First Industrial Park, West of Xingye Road, Heyi, Shajing Town, Baoan District, 518104 Shenzhen, Guangdong, PEOPLE'S REPUBLIC OF CHINA
Model identifier	J652-2402500DI
Input voltage	100-240V
Input frequency	50/60HZ
Output voltage	24VDC
Max. output current	2.5A
Max. output power	60W
Average active efficiency	88.0% min
Efficiency at low load (10%)	85.0% min
No load power consumption	0.21W max

Please notice - All products are subject to change without any notice. We take reservations for errors and omissions in the manual.

ALL RIGHTS RESERVED, COPYRIGHT DENVER A/S



denver.eu



Electric and electronic equipment and included batteries contains materials, components and substances that can be hazardous to your health and the environment, if the waste material (discarded electric and electronic equipment and batteries) is not handled correctly.

Electric and electronic equipment and batteries is marked with the crossed out trash can symbol, seen above. This symbol signifies that electric and electronic equipment and batteries should not be disposed of with other household waste, but should be disposed of separately.

As the end user it is important that you submit your used batteries to the appropriate and designated facility. In this manner you make sure that the batteries are recycled in accordance with legislature and will not harm the environment.

All cities have established collection points, where electric and electronic equipment and batteries can either be submitted free of charge at recycling stations and other collection sites, or be collected from the households. Additional information is available at the technical department of your city.

DENVER A/S
Omega 5A, Soeften

DK-8382 Hinnerup

Denmark

www.facebook.com/denver.eu